

GBLL Bar Latch

Features

- Latch bolt snaps into the strike to prevent accidental release
- Push tab on strike to release
- Can be installed in the reverse orientation. Latch bolt is easily released with a simple push of the "PUSH" section (refer to "Application Example")
- Components for installation to aluminium frame available contact Gripwell for assistance

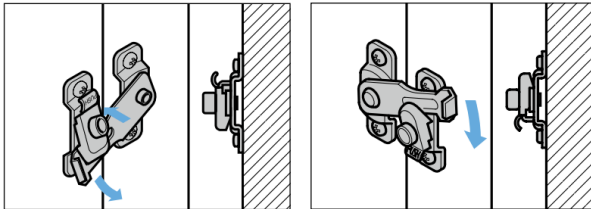
Material

- Stainless steel 304, polished

Parts Included

- Pan head tapping screw (SUS)

Application Example

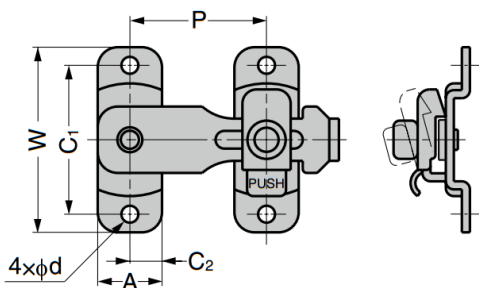
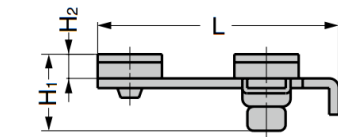


Reverse position

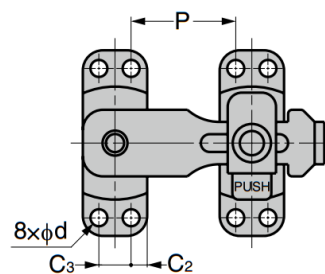
Normal position

Can be used in either normal or reverse position.

When installed reversely, latch bolt is easily released just with a single push.



GBLL-45, 60, 80, 100



GBLL-120, 150

Part No.	L	W	A	C ₁	C ₂	C ₃	H ₁	H ₂	P	d	Screws
GBLL-45	48	40	13	32	6.5	-	17	4.5	23 ± 3	3.2	3 x 10
GBLL-60	63	46	16	37	8		20	6	34 ± 4	4.2	
GBLL-80	85	65	20	53	10		22.5	7	47 ± 7	5	3.5 x 16
GBLL-100	105	80	25	66	12.5		26.5		59 ± 7	5.5	4.5 x 16
GBLL-120	127	100	28.5	80	6.75	15	28	8	56 ± 10	5.2	5 x 20
GBLL-150	155	120	30.5	92	7.25	16			74 ± 14		